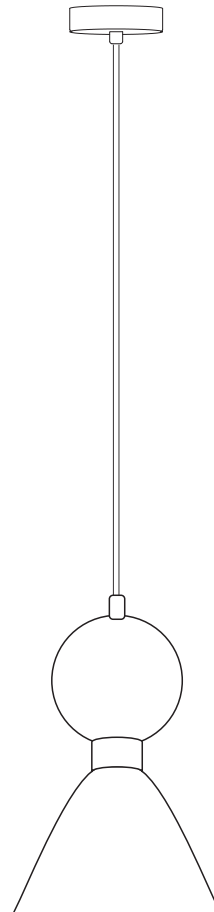
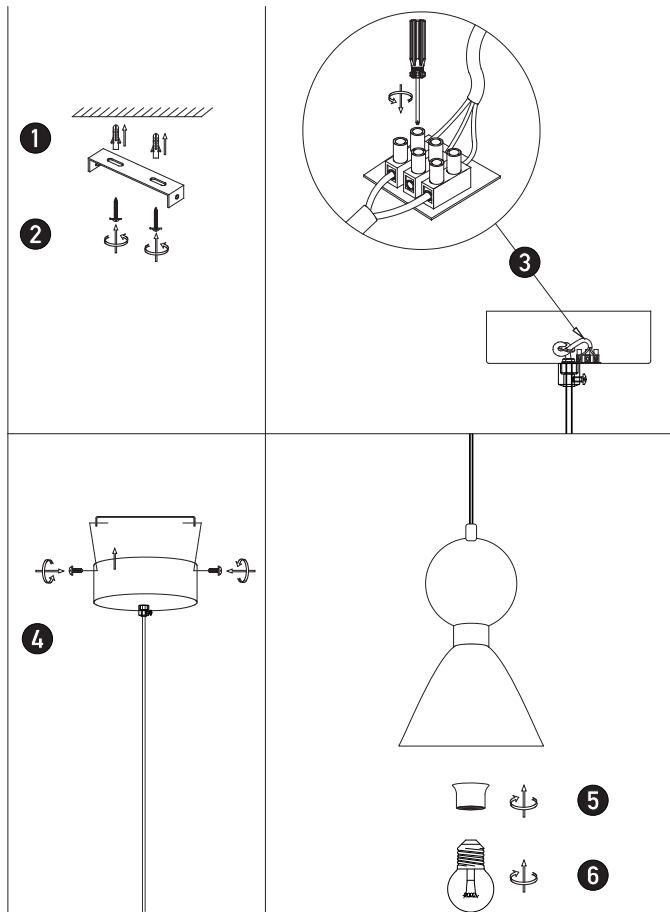


Connecting the Terminal Block

Connect main supply (brown - Live, blue - Neutral) into terminal block making sure all connections are tight.



INDOOR PENDANT LIGHT

23238

Please read instructions before commencing installation and retain for future reference.

SPECIFICATIONS

- **Material:** Brass | Gypsum | Marble
- **Lamp Type:** 1x E14 | 15W MAX
- **Ingress Protection:** IP20 Protection against entry of solid objects greater than 12mm in diameter.

INSTALLATION INSTRUCTIONS

- ⚠ Electrical products can cause death, injury, or property damage. Maintenance and installation should only be carried out by a professional electrician.
- Ensure the main supply is switched off.
- Insert the mounting anchors on the mounting surface (1).
- Fit the mounting bracket onto the mounting surface with the screws (2).
- Connect main supply wires to terminal block (3) making sure all connections are tight.
- Screw the base and fit the lighting fixture onto the mounting bracket (4).
- Use the ring to secure the gypsum shade on the lamp-holder (5).
- Install E14 bulb firmly into the lamp-holder (6).
- Reconnect power.

WARNING

- ⚠ Make sure that the products are installed properly before connecting to electricity. Do not cover the luminaire.
- Do not exceed the maximum wattage rating of the lamp.
- If the light source is contained in this luminaire (integrated LED), it shall only be replaced by the manufacturer, his service agent, or a similarly qualified person.

